

# ME, MYSELF AND I

## VOCABULARY

Personality

Appearance

Belong

Connect

Memory

Nature

Nurture

Culture

Relation

Sibling

Generation

We learn that the past means things that happened before. We begin to understand how things change over time by ordering events in our lives and in our parents' or grandparents' lives. We identify similarities and differences between life in the past and the present.

This builds on our learning about ourselves and our families in nursery and reception, and prepares us to learn more about chronology in Year 2.

## PEOPLE

Frida Kahlo

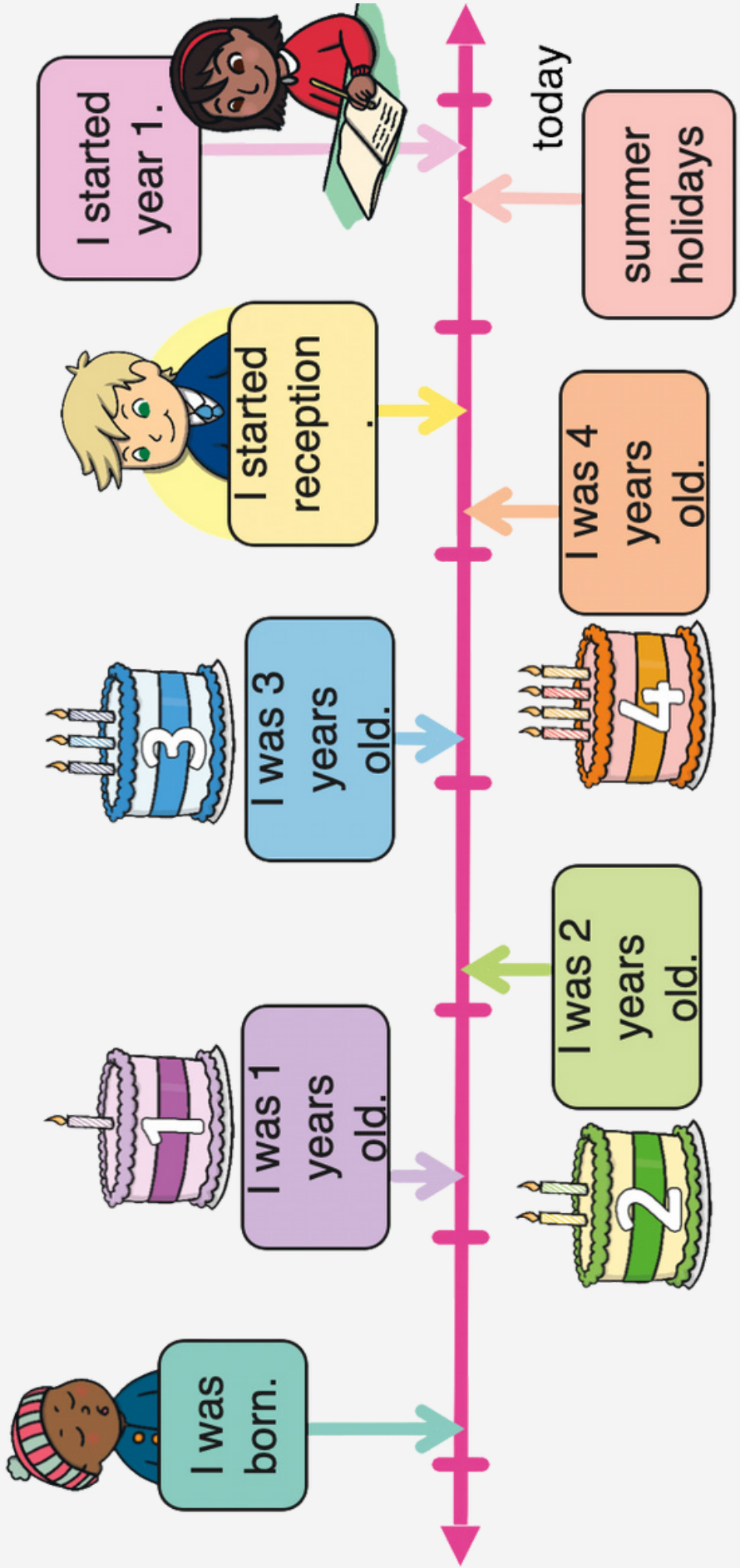


Cy Twombly



Pablo Picasso





# LEADER, HEALER

## VOCABULARY

Significant

Famous

Medicine

Equality

Healer

King's College Hospital

Crimea

Specialist

We will learn about significant individuals from different time periods and places who have contributed to the field of medicine. We will learn about how healthcare has changed over time.

This builds on our learning about people who help us in nursery and reception. It prepares us for our learning about the plague in Year 4, medical discoveries in the Golden Age of Islam in Year 5 and microbes in Year 6.

## PLACES

King's College Hospital



Crimea



## PEOPLE

Rufayda Al-Aslamia



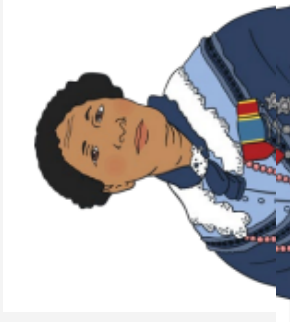
Mary Seacole



Harold Moody



# Mary Seacole Timeline



**1805**

Mary is born in Kingston, Jamaica.

**1853**

The Crimean War begins.

**1855**

Mary travels to the Crimea. She starts her own British hospital.

**1857**

Mary writes a book about her life.

**1836**

Mary gets married.

**1854**

Mary travels to England to be a nurse. She is told she cannot be a nurse.

**1856**

Mary goes back to England. She is homeless and ill.

**1881**

Mary dies.

# EUROPE

## VOCABULARY

Continent  
Tropic  
Refuge  
Destination  
Voyage  
Region  
Terrain  
Mountain range  
Adapt  
Europe  
Arctic circle

We learn about the continent of Europe and some of its countries. We will learn about where these countries are, their major cities and their key geographical features. This will include the physical geography of the Arctic Circle and important mountain ranges and rivers.

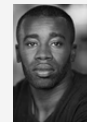
This builds on our learning about our local area and London in reception and Year 1, and about different geographical landscapes. It prepares us for more learning about different landscapes such as the Pacific Rim (Year 3), the Amazon (Year 5) and deserts (Year 5).

## PLACES



## PEOPLE

Chris Ofili



Kehinde Wiley



Vincent van Gogh





# AMAZONIA

## VOCABULARY

Biodiversity  
Anthropology  
Plantation  
Vegetation  
Habitat  
Biome  
Condense  
Precipitate  
Evaporate  
Equatorial  
Prime Meridian  
Tupian  
Nomad  
Kapok tree  
Indigenous

We will learn about the Amazon Rainforest in South America. We will learn about the biome, the Amazon River and the water cycle. We will find out what deforestation is and how it affects local communities.

This builds on our learning about different geographical landscapes such as the British coast (Year 2), the Pacific Rim (Year 3) and Europe (Year 3). It prepares us for further learning about biomes and vegetation belts in the rest of Year 4 and beyond.

## PEOPLE

Henry Moore



Simone Leigh



Paige Bradley



## PLACES

Brazil



Peru



Colombia



Bolivia



Venezuela



Guyana



Suriname



Ecuador



French Guiana







# DESERT SURVIVAL

## VOCABULARY

Barren  
Arid  
Wasteland  
Desolate  
Dormant  
Brush  
Adapt  
Indigenous  
Terrain  
Plateau  
Oasis  
Desertification  
Dune  
Wilderness  
Tundra  
Rockies  
Desert scrub  
Mojave  
Great Basin

We will learn about the deserts of North America. We will learn about their key features and how indigenous peoples have adapted to survive in these extreme environments. We will compare deserts with other biomes.

This builds on our previous learning about cold deserts such as Antarctica and the Arctic.

## PLACES

Mojave



Great Basin



## PEOPLE

Mojave



Paiute



Chemehuevi





# UNDER THE MICROSCOPE

## VOCABULARY

Bacteria

Virus

Fungus

Spore

Cholera

Inequalities

Plankton

Algae

Amoeba

Bacilli

Sickle Cell

Disease

Penicillin

We will deepen our understanding of medical discoveries including the discovery of penicillin by Alexander Fleming (linking it to World War I and 2). We will also study other significant medical professionals including Dame Elizabeth Anionwu and John Snow, who contributed making healthcare fairer for everyone.

This builds on our previous learning about medical discoveries (for example, the Plague and important discoveries during the Golden Age of Islam).

## PEOPLE

Dame Elizabeth



Anionwu

Alexander Fleming

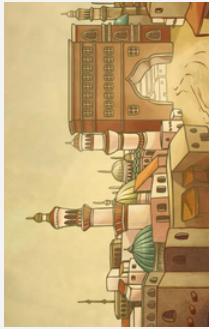


John Snow



Edward Jenner





Golden Age of Islam  
founding of the first  
hospitals & Rifa'ida Al-  
Aslamia is the first  
female Muslim nurse

622-1258



The Great Plague

1665



Discovery of vaccination by  
Edward Jenner

1796



Alexander Fleming discovers  
penicillin

1928



COVID-19 pandemic

2019

The Black Death

1346-1353



Bostonian Onesimus's  
discovery of inoculation helps  
stop a smallpox epidemic in  
Boston

1721



John Snow helps stem the  
cholera epidemic in London

1854



Dame Elizabeth Anionwu  
becomes the UK's first sickle-  
cell nurse specialist

1979

